

Smile

John Turner, Geoffrey Parsons

Charlie Chaplin

Intro

F **F⁶**

Smile, though your heart is ach - ing.

4

Fmaj⁷ **F⁶**

Smile, e - ven though it's break - ing. When there are

7

Fdim **Gm⁷** **D⁷**

clouds in the sky, you'll get by. If you

10

Gm⁷ **B^bm⁷**

smile through your fear and sor - row, smile and may -

13

E^b7 **F**

be to - mor - row, you'll see the

15

Gm⁷ **C⁷**

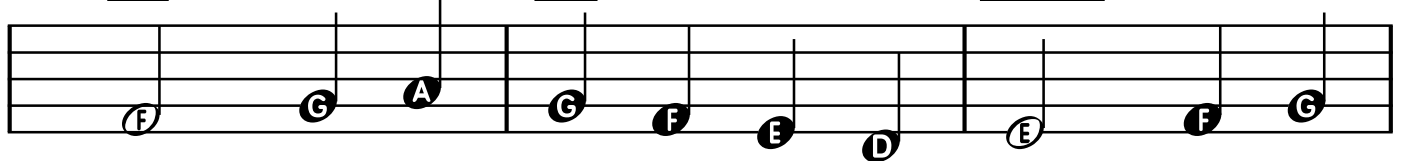
sun come shin - ing through for you.

18

F

F⁶

Fmaj⁷

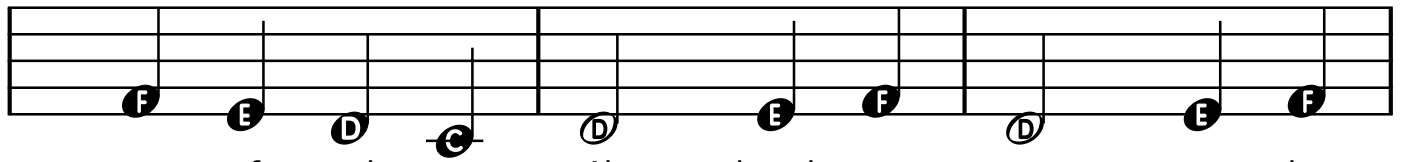


Light up your face with glad - ness. Hide ev - 'ry

21

F⁶

A^bdim



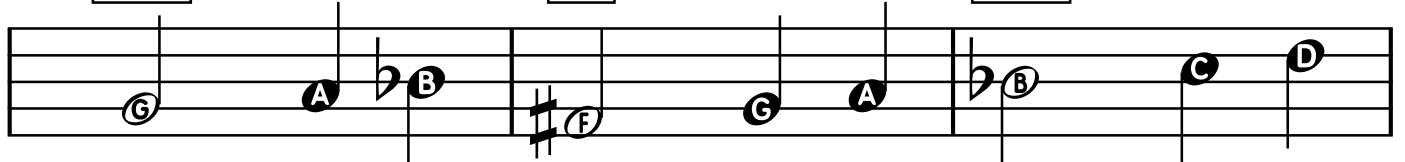
trace of sad - ness, Al - though a tear may be

24

Gm⁷

D⁷

Gm⁷

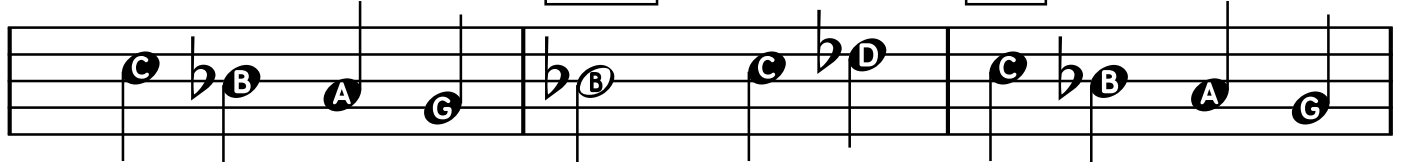


ev - er so near. That's the time you must

27

B^bm⁷

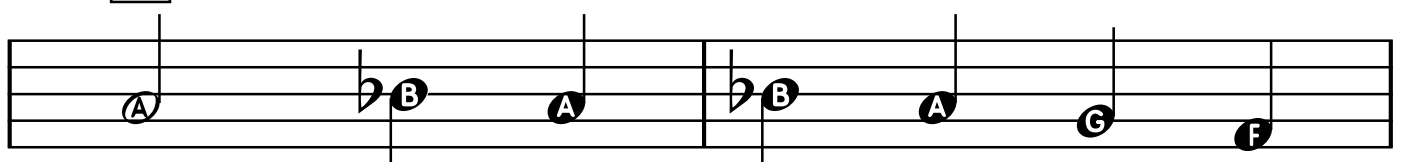
E^b7



keep on try - ing, smile, what's the use of cry - ing.

30

F



You'll find that life is still worth -

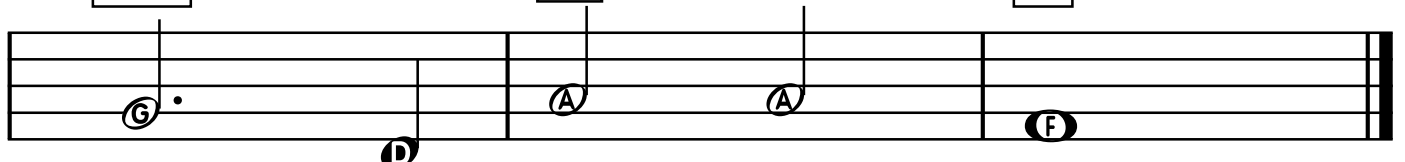
32

Gm⁷

C⁷

F

Press Ending



while, if you just smile.